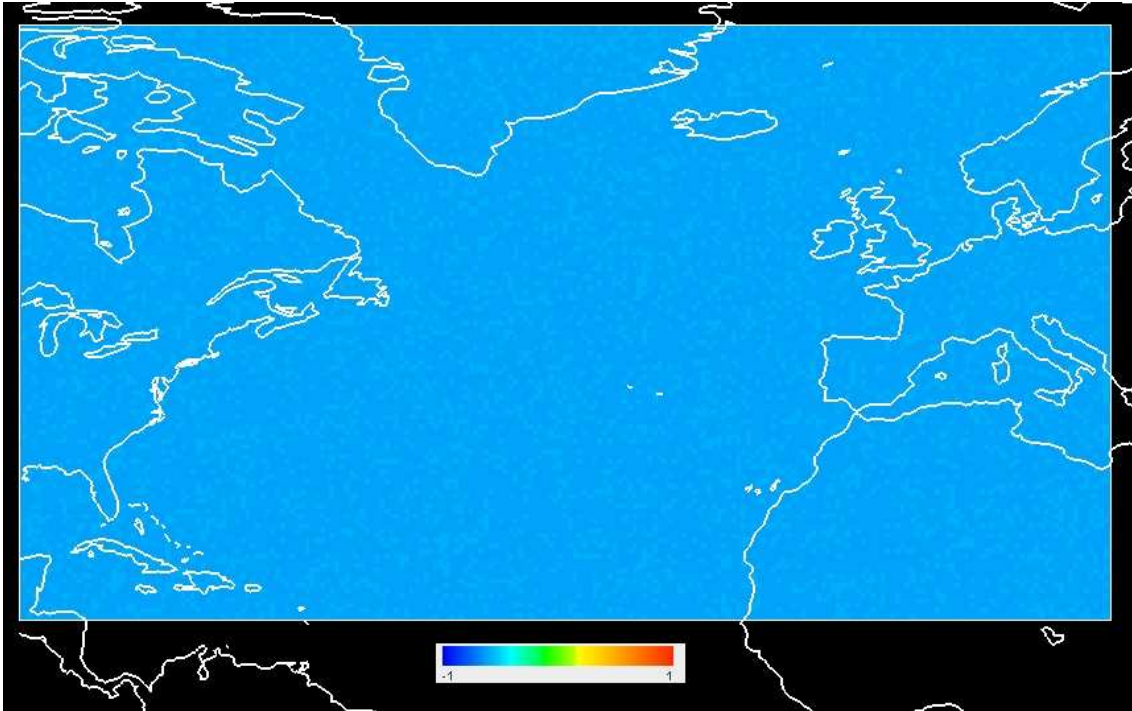


“regional subset (wgrib2 –small_grib)” minus “original GRIB2 global file”

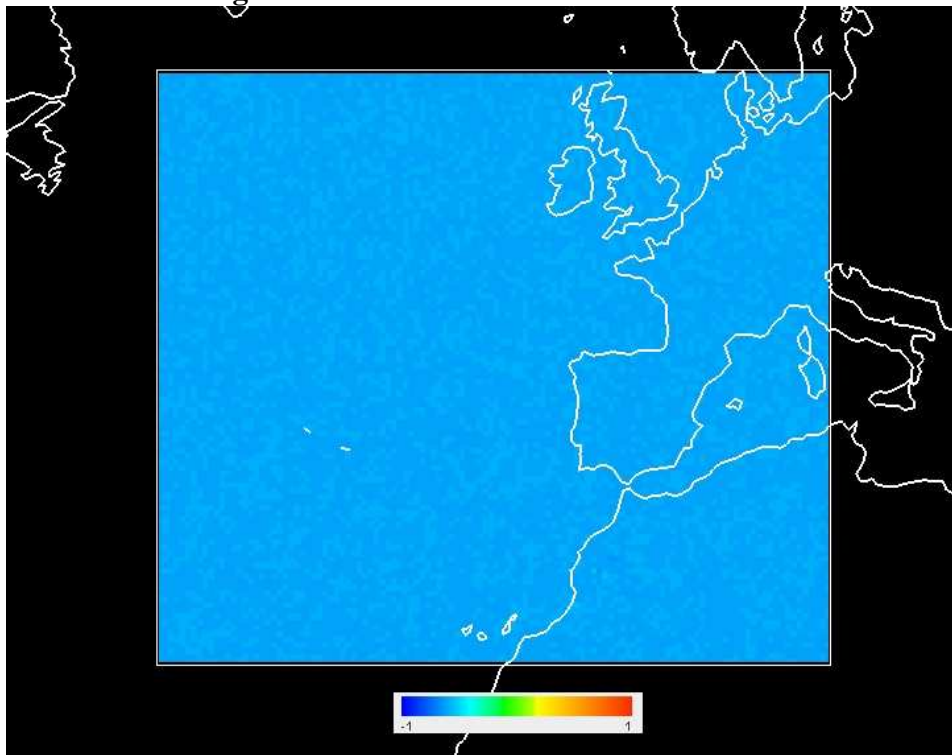
Surface Pressure field

GRIB2 files



truncation errors about -0.6Pa

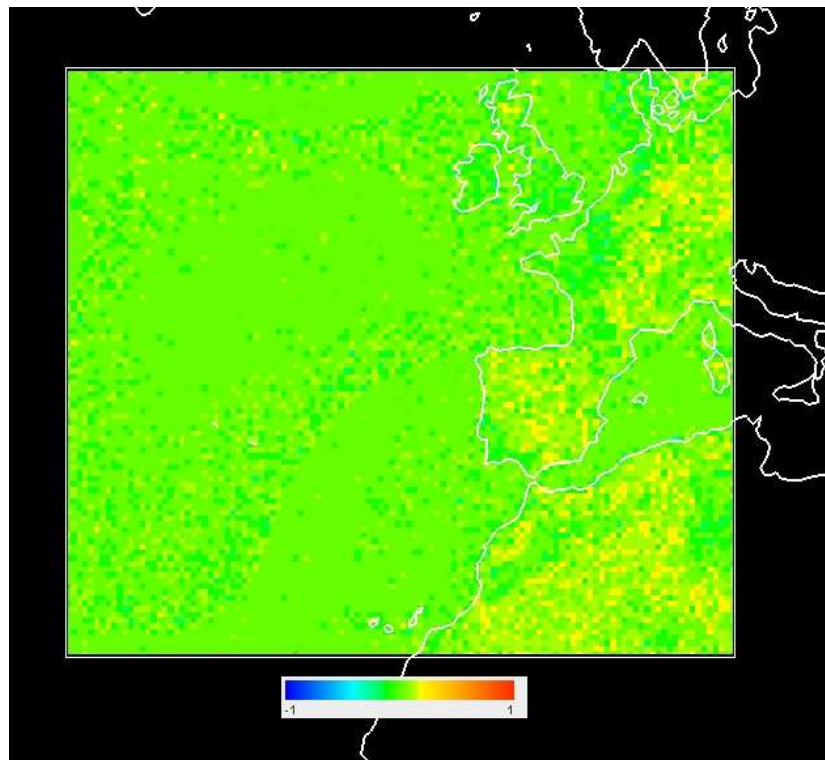
Output from WPS-metgrid



differences about -0.6Pa

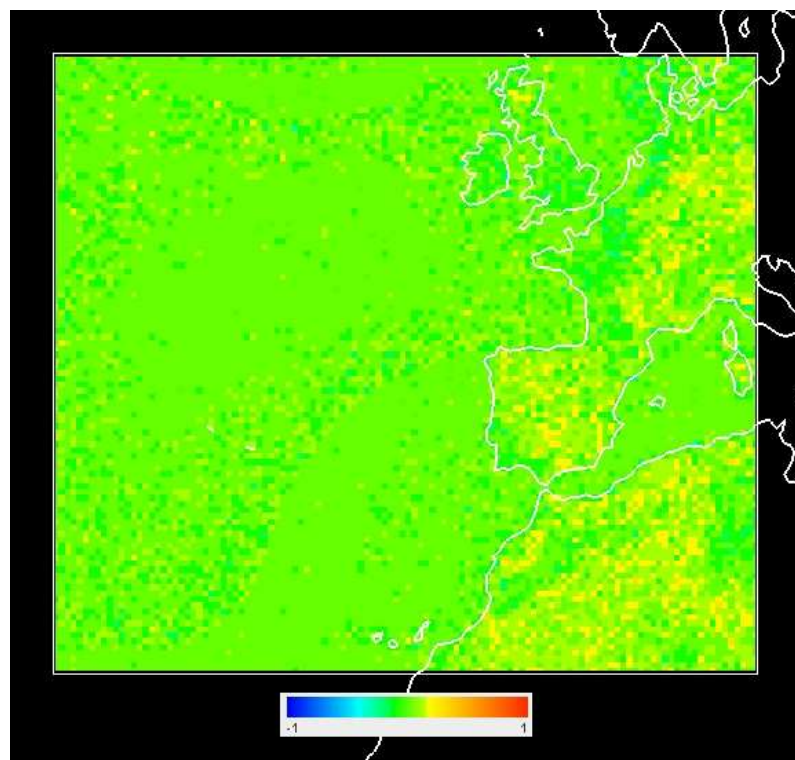
“regional subset (wgrib2 –small_grib)” minus “original GRIB2 global file”

Output from WRF-real (wrfinput_d01 file)



differences between -0.3 and 0.3 Pa (a sign change occurs in many points)

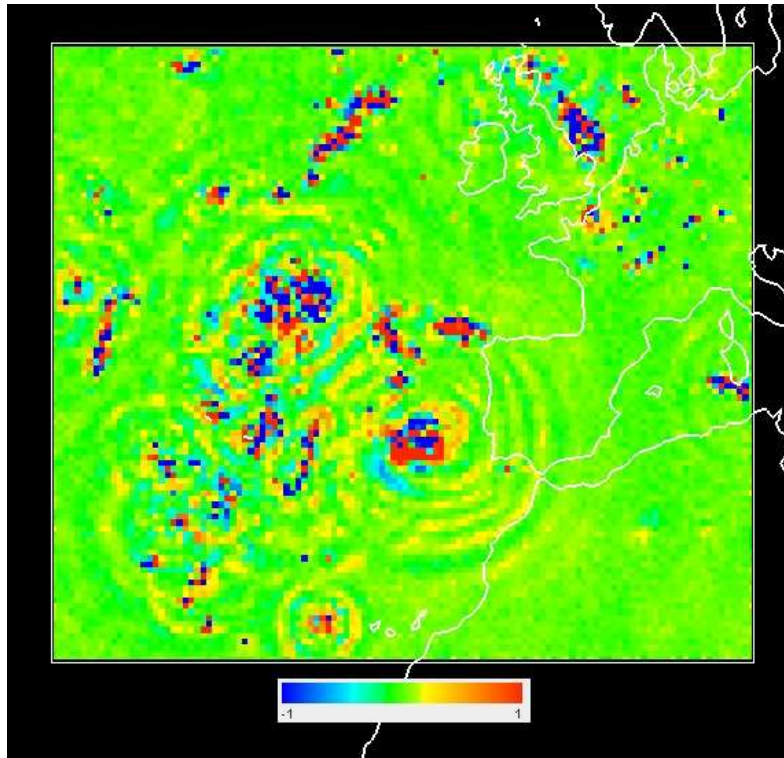
Output from WRF-ARW (wrfout) – Forecast time: 00HR



differences between -0.3 and 0.3 Pa (the same as in the step before)

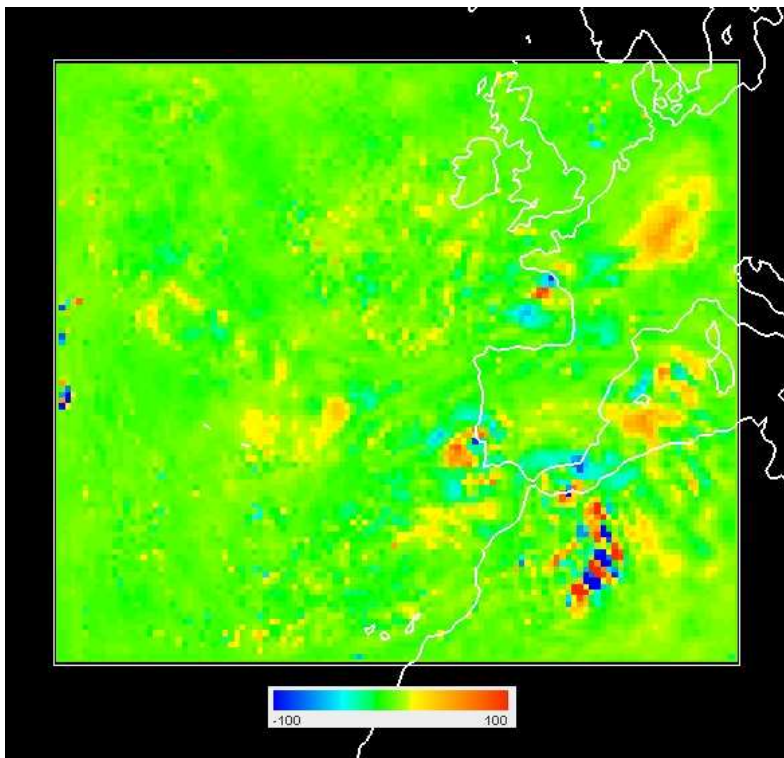
“regional subset (wgrib2 –small_grib)” minus “original GRIB2 global file”

Output from WRF-ARW (wrfout) – Forecast time: 03HR



differences growing up to 1Pa

Output from WRF-ARW (wrfout) – Forecast time: 96HR

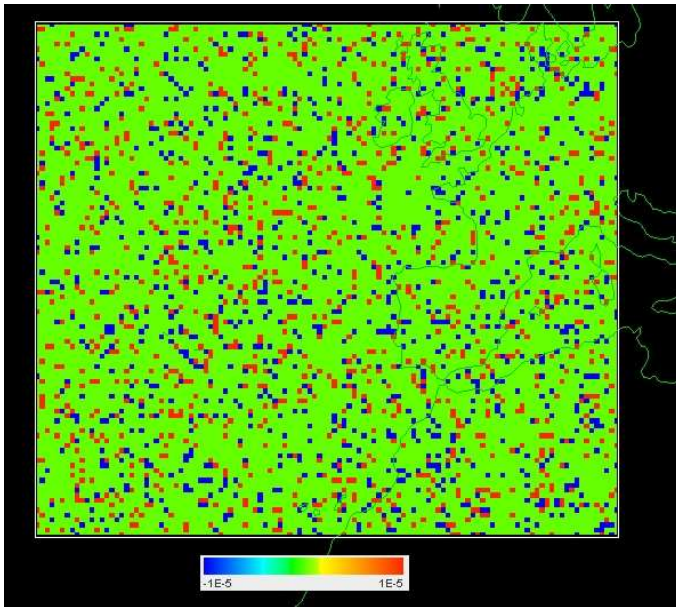


differences growing up to 100 Pa (1 mb) [WARNING: scale changes]

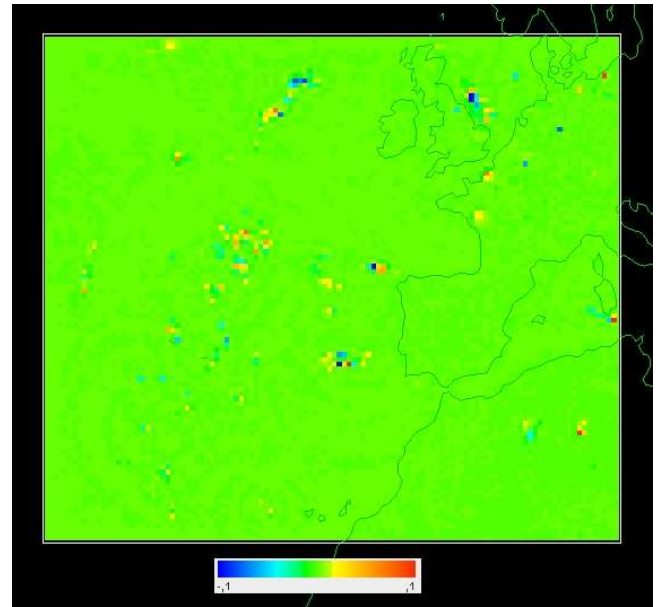
“regional subset (wgrib2 -small_grib)” minus “original GRIB2 global file”

Temperature at 2m field

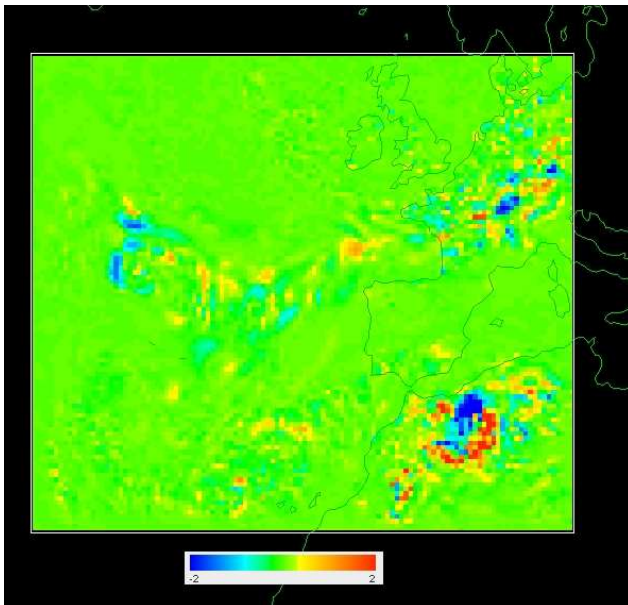
Output from WRF-ARW (wrfout_d01 file)



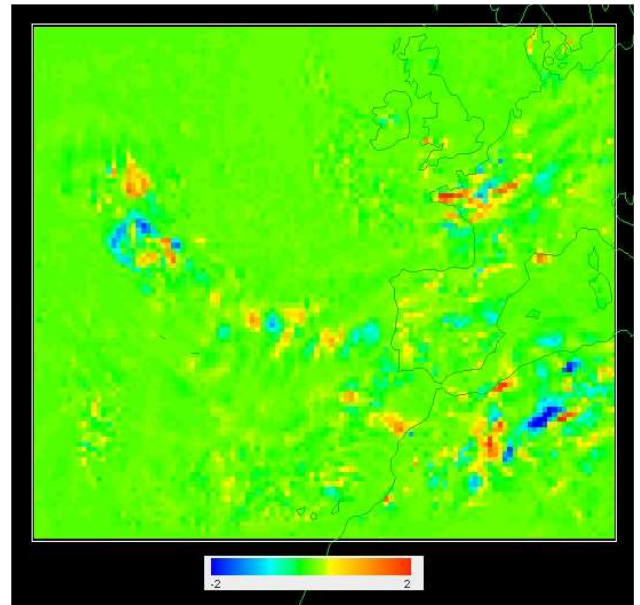
Forecast time: 00hr
Differences about 10^{-5} K



Forecast time: 03hr
Differences about 0.1 K



Forecast time: 84hr
Differences about 2 K

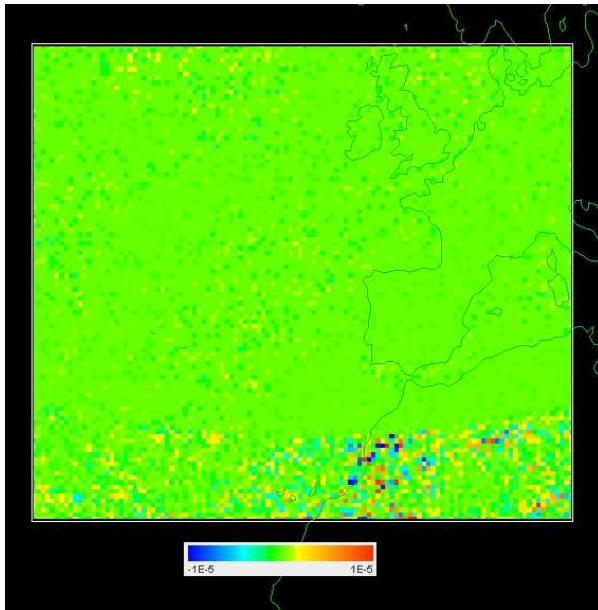


Forecast time: 96hr
Differences about 2 K

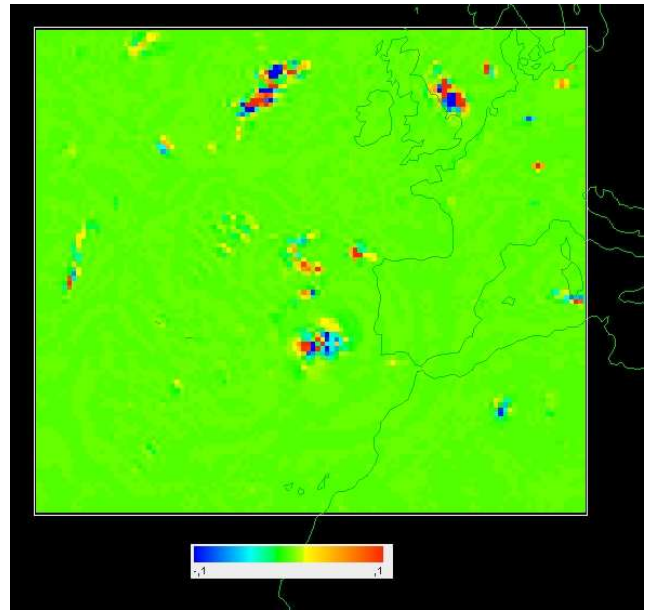
“regional subset (wgrib2 –small_grib)” minus “original GRIB2 global file”

Wind at 10m field

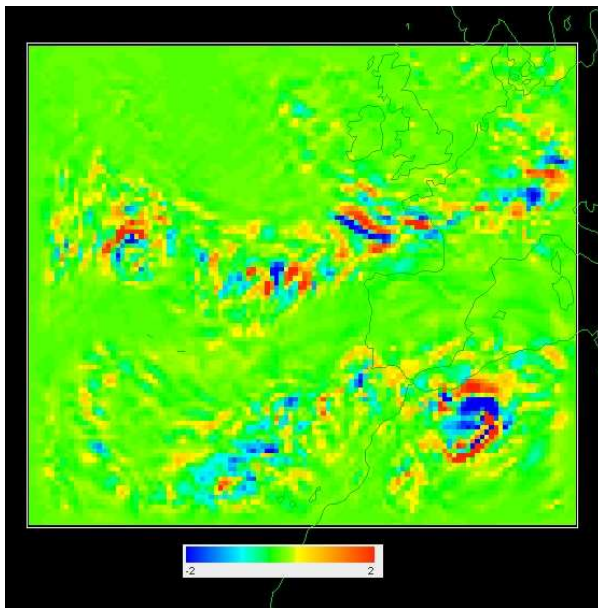
Output from WRF-ARW (wrfout_d01 file)



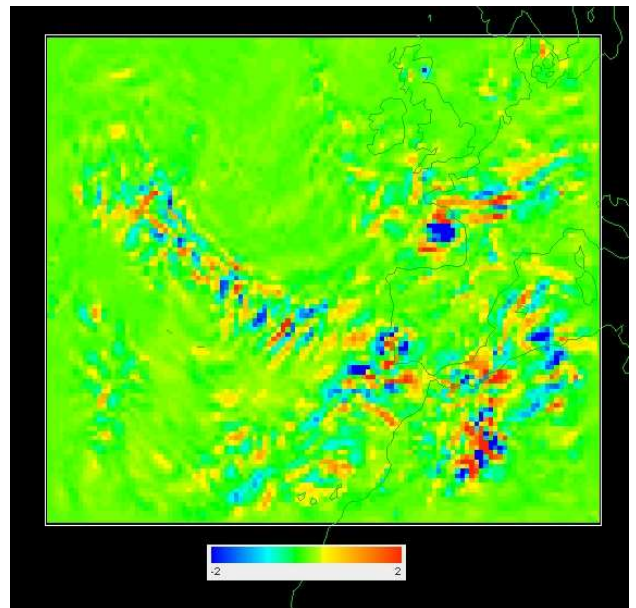
Forecast time: 00hr
Differences about 10^{-5} m/s



Forecast time: 03hr
Differences about 0.1 m/s



Forecast time: 84hr
Differences about 2 m/s



Forecast time: 96hr
Differences about 2 m/s