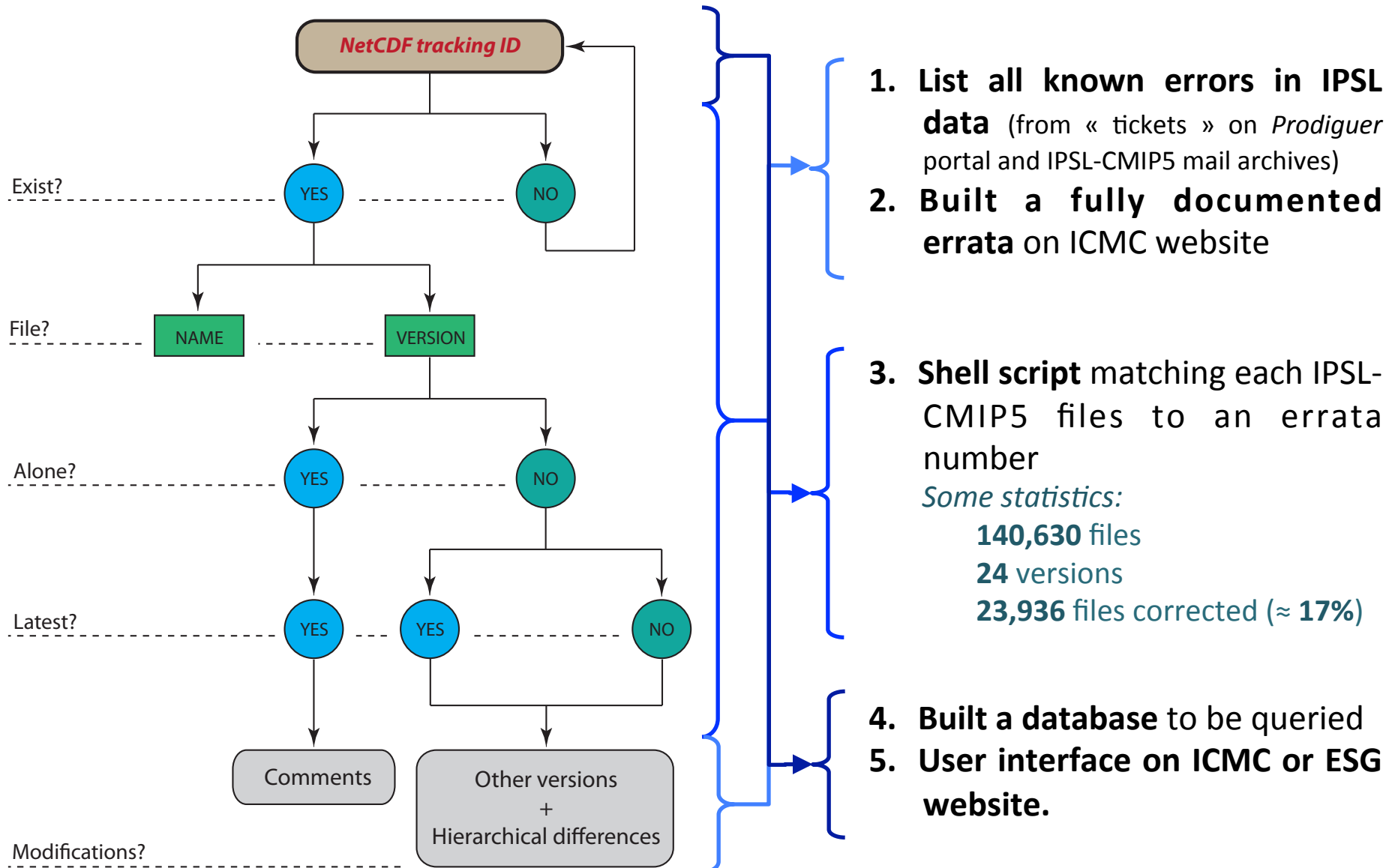


# How to clarify IPSL data corrections for CMIP5 ?


## Development scheme and tools



# How to *clarify* IPSL data corrections for CMIP5 ?

1 + 2 = Errata on ICMC website (currently under construction)


30 errors currently known



Font size [Bigger](#) [Reset](#) [Smaller](#)

Search...

[IPSL contribution to CMIP5](#)



You are here: [Home](#) > [Research](#) > [International Projects](#) > [CMIP5](#) > IPSL-CM5 errata

## IPSL-CM5 errata

(Click on errata number to read more details)

	Brief description	Relevant files	New version
#0	Duplicated files	Isolated files	
#1	Wrong soil depth axis from ORCHIDEE	All tsl files	20120430
#2	Wrong pH computing	All ph files	20120430 20120526
#3	Duplicated grid-cells on the edges of ocean grid	All sftof files	20120430
#4	Incomplete 6-hourly files	va_6hrPlev_IPSL-CM5	20111119
#5	Wrong albedo and cloudy fraction from ISCCP	All albiscpp files	
#6	Corrupted files	ua_6hrLev_IPSL-CM5	20120114
#7	Aerosols forcing prescribed in a wrong way	All sstClimAerosol e	Unpublished
#8	Wrong units for variables related to runoff	All mrrr files	20120430
#9	Corrupted files	hus_6hrLev_IPSL-CM5	20120212
#10	10-years offset	ua_6hrPlev_IPSL-CM5	20120114

### Main Menu

- Home
- Who Are We ?
- Research
  - Working Groups
  - International Projects
    - CMIP5
      - Special Issue
      - IPSL-CM5 errata
    - CMIP3
    - European Projects
    - French Projects
    - Old Projects
    - Funding Projects
    - Open Positions
  - Model and Data

# How to *clarify* IPSL data corrections for CMIP5 ?

## 3 + 4 = Database

ps_3hr_IPSL-CM5A-LR_piControl_r1i1p1_275001010300-279912312100.nc	6356e7f9-1c8b-4019-88b2-12e62a7edbe0	20110324	YES	YES	N
mrro_3hr_IPSL-CM5A-LR_piControl_r1i1p1_275001010130-279912312230.nc	b7a6aa15-052c-4e68-b7b3-ade4d204aecb	20110324	YES	YES	N
mrsos_3hr_IPSL-CM5A-LR_piControl_r1i1p1_275001010130-279912312230.nc	0cb2b6b2-5c05-4339-bb42-ab344fa9ca4f	20110324	YES	YES	N
ps_6hrLev_IPSL-CM5A-LR_piControl_r1i1p1_180001010300-184912312100.nc	a4371dfc-c1d3-4817-ac01-78511aa78cf7	20110324	YES	YES	N
ps_6hrLev_IPSL-CM5A-LR_piControl_r1i1p1_185001010300-189912312100.nc	cf19f936-8d63-43c6-92b6-91019c829774	20110324	YES	YES	N
clt_cfDay_IPSL-CM5A-LR_piControl_r1i1p1_22000101-23991231.nc	6fef2b8-be86-412e-a67b-46900298adbb	20110324	NO	NO	N
clt_cfDay_IPSL-CM5A-LR_piControl_r1i1p1_24000101-25991231.nc	b5d11ab9-ba5f-4ff2-881b-263c452896b6	20110324	NO	NO	N
clt_cfDay_IPSL-CM5A-LR_piControl_r1i1p1_26000101-27991231.nc	9aa206e2-42dd-4c7d-a667-7765b4fea767	20110324	NO	NO	N
hfls_cfDay_IPSL-CM5A-LR_piControl_r1i1p1_18000101-19991231.nc	18d52383-0b40-499e-aefa-585a4dfd482d	20110324	NO	NO	N
hfls_cfDay_IPSL-CM5A-LR_piControl_r1i1p1_20000101-21991231.nc	7d003939-5c0a-49e9-9628-394fda41334b	20110324	NO	NO	N
parasolRefl_cfDay_IPSL-CM5A-LR_piControl_r1i1p1_18000101-18091231.nc	7799fef5-5653-4585-85d8-3f0b495e9c47	20111119	NO	YES	N
parasolRefl_cfDay_IPSL-CM5A-LR_piControl_r1i1p1_18100101-18191231.nc	d30e8f33-b23c-49f8-875e-7c9075921072	20111119	NO	YES	N
parasolRefl_cfDay_IPSL-CM5A-LR_piControl_r1i1p1_18500101-18591231.nc	1fd5e1eb-b8f5-4d4f-a38c-8348ee9e2628	20111119	NO	YES	N
parasolRefl_cfDay_IPSL-CM5A-LR_piControl_r1i1p1_18600101-18691231.nc	f16adc65-d638-481a-9251-e0278b16e8a9	20111119	NO	YES	N
parasolRefl_cfDay_IPSL-CM5A-LR_piControl_r1i1p1_18700101-18791231.nc	6d29b810-9f28-4796-bc5c-7dfbed6a0a32	20111119	NO	YES	N
parasolRefl_cfDay_IPSL-CM5A-LR_piControl_r1i1p1_18800101-18891231.nc	54e9cf03-5f13-4471-8e61-8f2ae75dc37e	20111119	NO	YES	N
parasolRefl_cfDay_IPSL-CM5A-LR_piControl_r1i1p1_18900101-18991231.nc	ffd1d4ef-c5f6-4e1d-bb85-91b4e83dcd33	20111119	NO	YES	N

File name

Tracking ID

Version

Unique file?

Latest version?

Errata number

## Prospects

- Engage discussion about versioning during the ESGF publication process,
- Provide procedure/tools for future data publication (CMIP6 ?).