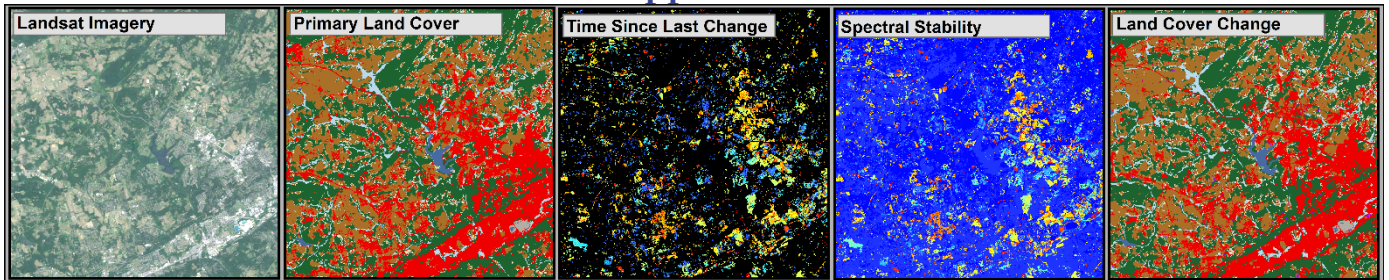


Research Fellowship Opportunity

at the USGS Earth Resources Observation and Science (EROS) Center

Research and Development of Innovative Land Change Science Techniques and Applications



To support our core mission, understanding a changing Earth, the USGS Earth Resources Observation and Science (EROS) Center has initiated the Land Change Monitoring, Assessment, and Projection (LCMAP) project that is generating annual LULC and land change information (regarding changes in land use, cover, and condition) and the assessment of those changes on environmental systems. The LCMAP land cover mapping and land change monitoring goals are to create a suite of annual land cover and land change maps and statistics, provide a capability to detect and characterize historical land change at any point from the 1985-present Landsat record, and enable the detection of land change in near real time. The initial techniques for producing integrated land change and land cover data in LCMAP are based on the Continuous Change Detection and Classification (CCDC) algorithm. We expect this research fellowship opportunity to address our focus on further development and improvement of the current change detection algorithm and novel applications for results. Geographically, initial research should focus on the United States.

Duty Station: USGS Earth Resources Observation and Science Center, Sioux Falls, South Dakota.

Areas of Ph.D.: Remote sensing, geography, and ecology (candidates holding a Ph.D. in other disciplines but with knowledge and skills relevant to this Research Opportunity may be considered).

Further information about research opportunity S34 is available at:

<https://geology.usgs.gov/postdoc/opps/research.html> and by contacting research advisors Jesslyn Brown (ph: 605-594-6003, jfbrown@usgs.gov) and Kristi Sayler (ph: 605-594-6058, sayler@usgs.gov). Application deadline is May 7, 2019.

To learn about the application process and other research opportunities through the USGS Mendenhall Fellowship Research program visit: <http://geology.usgs.gov/postdoc>.